

Toyota 4.5 EFI 5VMap Ex-Driver

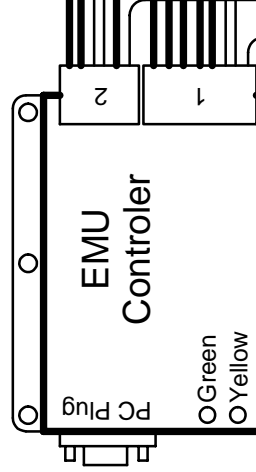
Harness Required: E01 Ver 1.1 & E09 Ver 1.0

Last Changed: 13/08/2008

Drawing Ver: 1.0

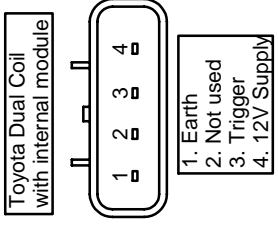
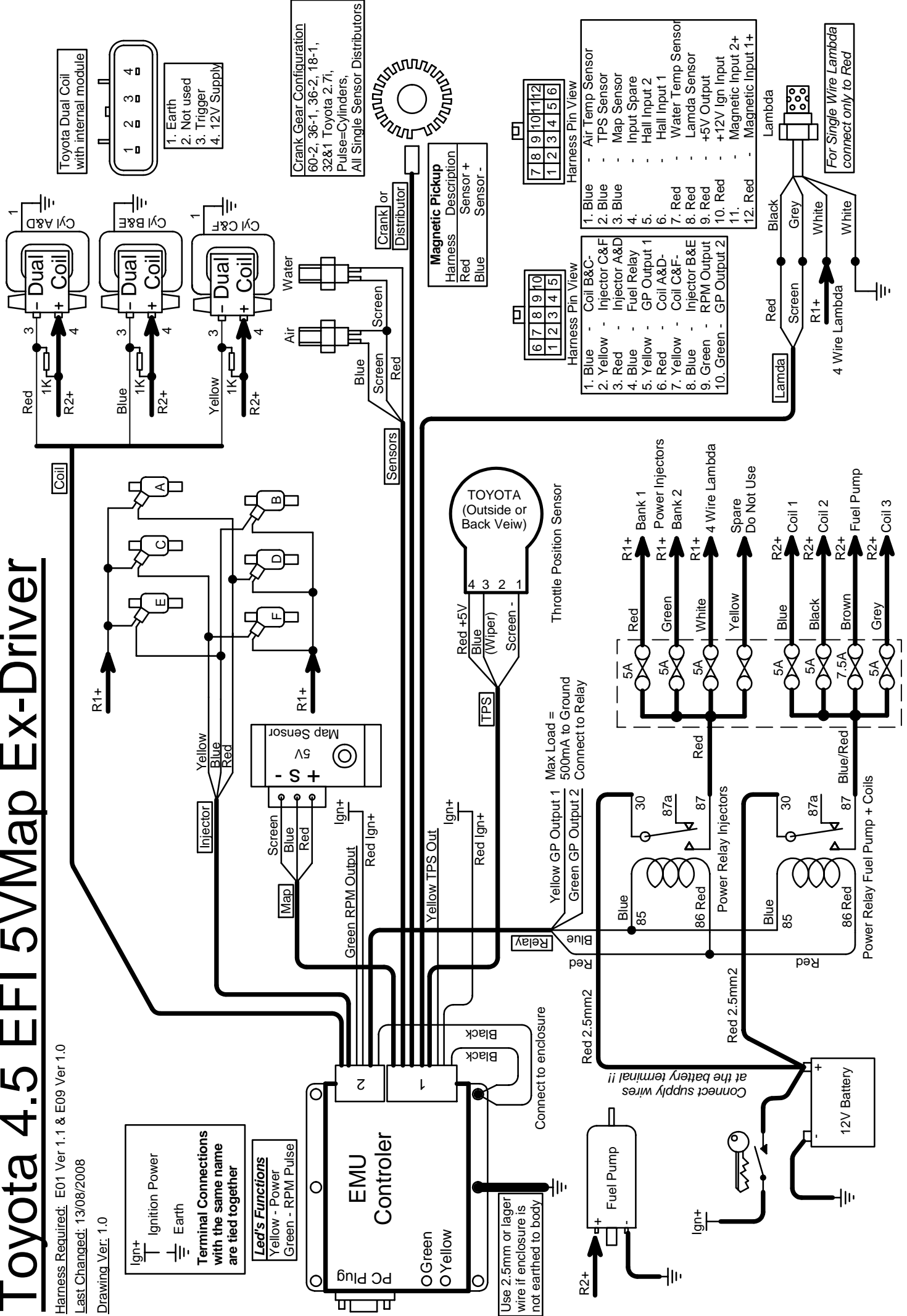
Ign+ Ignition Power
 Earth
Terminal Connections with the same name are tied together

Led's Functions
 Yellow - Power
 Green - RPM Pulse

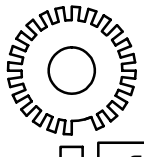


Use 2.5mm or larger wire if enclosure is not earthed to body

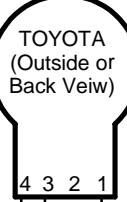
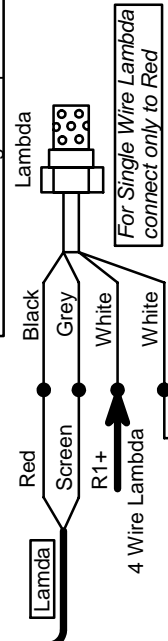
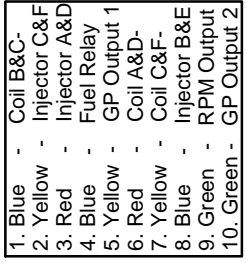
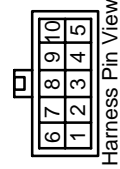
Connect to enclosure



Crank Gear Configuration
 60-2, 36-1, 36-2, 18-1,
 32&1 Toyota 2.7i,
 Pulse=Cylinders,
 All Single Sensor Distributors



Magnetic Pickup
 Harness Description
 Red Sensor +
 Blue Sensor -



Max Load = 500mA to Ground
 Connect to Relay

